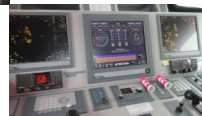


Patrolni brod



RejtingJoš uvek neocenjen
Cena

[Postavite pitanje o ovom plovilu](#)

Opis

Patrolni brodovi: Patrolni brod

Patrol Fast Crew Supplier

Built: 2016

Dimensions: 33.3 x 7.4 x 3.28mtrs Draft 2.50 mtrs max.

Material: Aluminium both hull and superstructure

Propulsion: 3x Fixed pitch propellers

Main engines: 3x Caterpillar, 4800 hp total

Engine room ventilation: 65.000 m³/hr

Speed: ± 30 knots

Range: 1250 nm at max. speed

Bow thruster: 75 kW, hydraulic

Generator sets: 2x Caterpillar, type C4.4 T, 74 kVA

Accommodation: 18 berths total

Cargo deck area: 75 m²

Max. deck load: 2.5 tonnes/m²

Deck equipment: Response boat and A-frame davit

Nav./comm. equipment: According to GMDSS A2

Remark: Ballistic and armoured protected and has fifi capabilities.

Class: Bureau Veritas